

Measuring principle

This is a type of force gauge, where the load cell measures the side force on big wires to calculate the tension, that the wire exerts.

Applications

Side pressure tensiometers or wire rope tension testers help to measure the tension exerted by pre-tensionised, non-moving big wires like transmission tower cables, power line wire, elevator ropes, overhead cables, ropes, cables, zip-lines, guardrail cables, etc.

Features

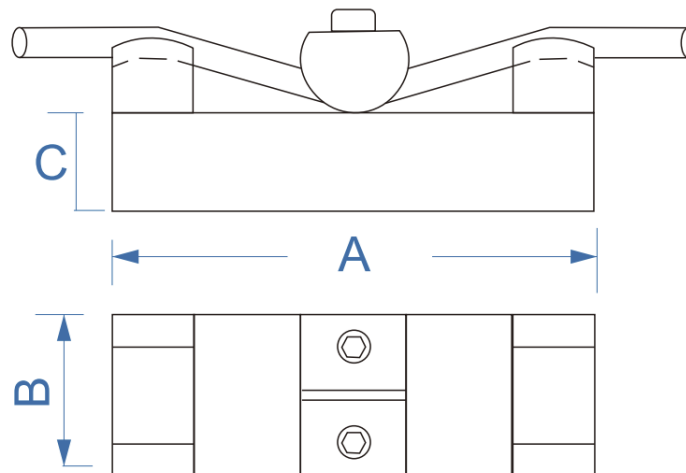
- Four models with measuring range upto 98,000N
- Sturdy sensor to measure on rough cables and ropes
- 2 reversed backlit display for easier readability
- Convertible measurement units N, kg, Lb
- Power source from batteries or DC power supply



Technical Specifications

Model	<i>Metrix+</i> SPT 500	<i>Metrix+</i> SPT 1K	<i>Metrix+</i> SPT 5K	<i>Metrix+</i> SPT 10K
Range	±500kgf/ 4,900N	±1,000kgf/ 9,800N	±5,000kgf/ 49,000N	±10,000kgf/ 98,000N
Resolution	0.1kgf/ 1N			
Accuracy	±0.5% FS ±1 digit			
Units	N, kgf, Lbf			
Power	2 x 1.5V AA batteries or 5V DC power supply			
Safe Load	150% FS (buzzer alarm over 110% FS)			
Features	2 reversed backlit display, data hold, low battery indication, auto power off			
Operating	Temp: 0~50C, Humidity <80% RH			
Surrounding	No vibrating or corrosive medium			
Dimensions	Main unit: 175 x 80 x 36mm, approx. 1.2kgs Sensor: 140 x 65 x 105mm			
Std accessories	Main unit, sensor, manual, case			

Sensor dimensions



Wire rope tension	Wire rope diameter	A	B	C
500KG	6MM-16MM	140MM	30MM	32MM
1T				
2T				
5T				

Wire rope tension	Wire rope diameter	A	B	C
1T	17MM-26MM	180MM	60MM	36MM
2T				
5T				
10T				